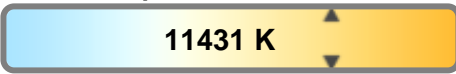
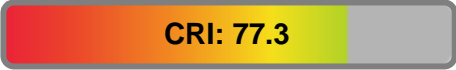


Color Temperature:



**Total Lumen Output:**  
6502 lm

Light Quality:

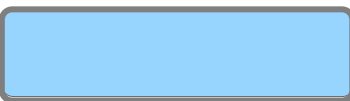


**Peak:**  
31675 cd

Light Efficiency:



**Power: 339 W**



CIE 1931  
x: 0.274  
y: 0.279

**Test: Zoom Out**

**Date: 7/25/2018**

**Voltage: 109 V**

**Current: 3.12 A**

**Frequency: 60 Hz**

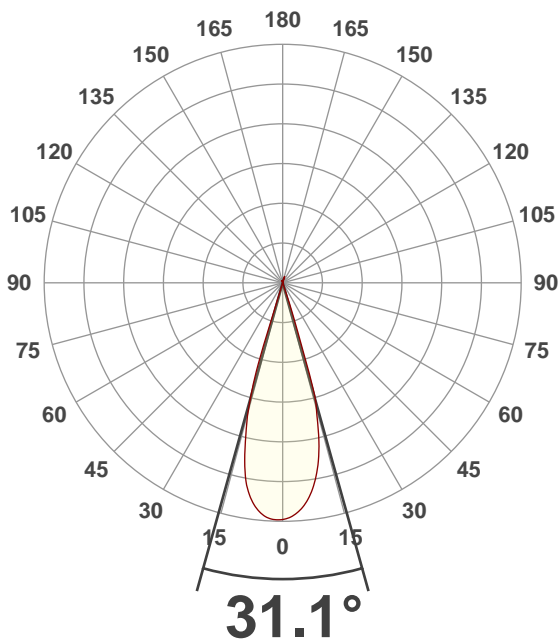
**CRI: 77.3**

**CQS: 71.3**

**TM30: 71.9**

**Note:**

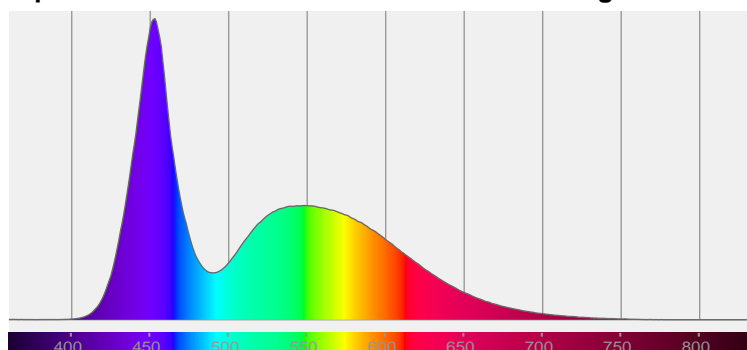
**Beam Angle**



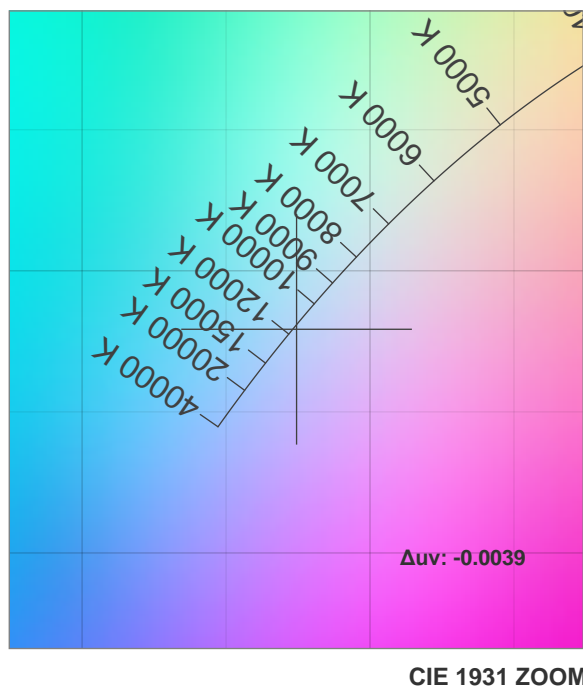
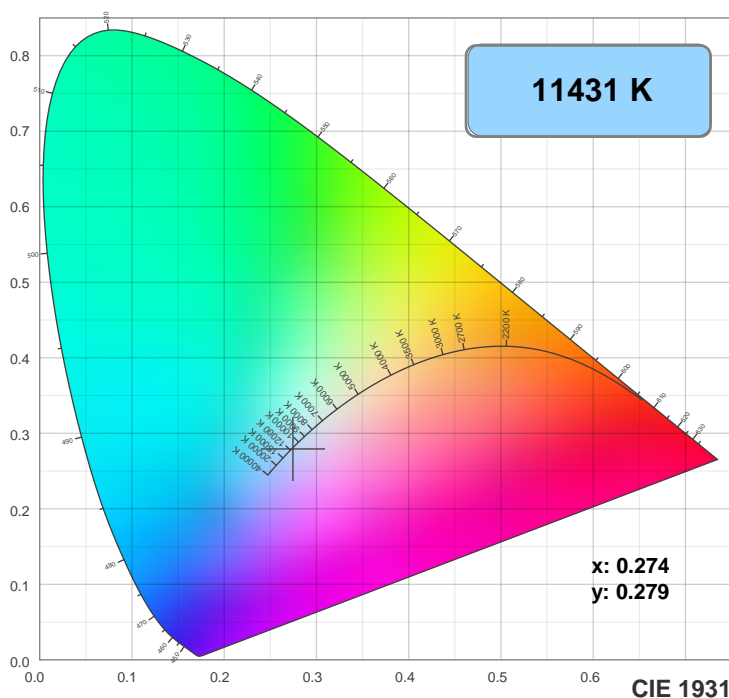
Beam Angle 50%	Field Angle 10%	Cutoff Angle 2.5%
31.1°	36°	37.1°

**Spectra**

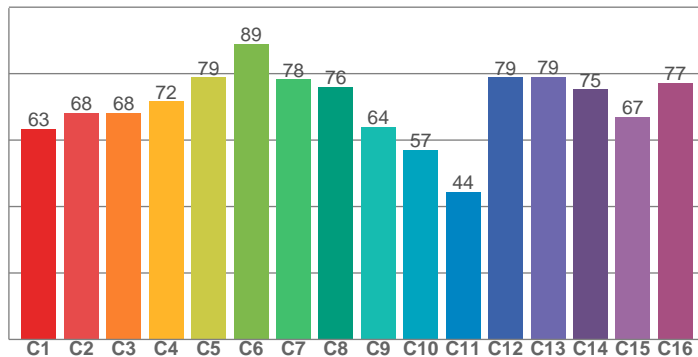
**Dominant Wavelength: 473nm**



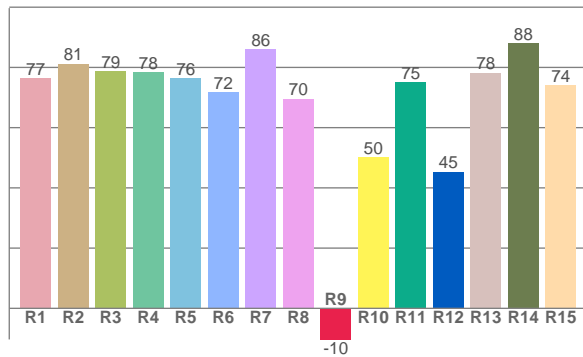
## Color Details



TM30: 71.9



CRI: 77.3 (R1-R8)



CRI R values, only R1-R8 are used to calculate final CRI value

R1	R2	R3	R4	R5	R6	R7	R8	R9	R10	R11	R12	R13	R14	R15
76.5	81.2	78.7	78.3	76.4	71.7	86.1	69.6	-10.3	50.0	75.0	45.3	78.2	88.0	74.0

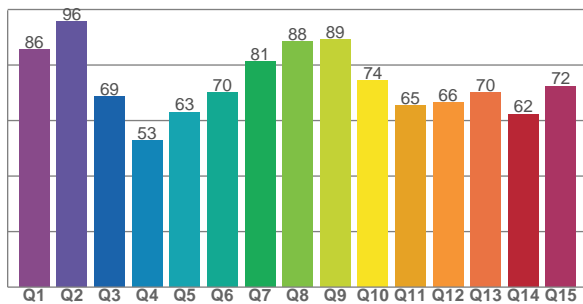
TM30 C Values, 16 binned values out of total of 99 C values

C1	C2	C3	C4	C5	C6	C7	C8	C9	C10	C11	C12	C13	C14	C15	C16
63.4	68.2	68.2	71.6	78.8	89.0	78.2	76.0	63.9	57.1	44.4	78.9	78.9	75.3	66.9	77.2

CQS Q Values

Q1	Q2	Q3	Q4	Q5	Q6	Q7	Q8	Q9	Q10	Q11	Q12	Q13	Q14	Q15
85.5	95.7	68.6	52.8	63.0	70.0	81.2	88.4	89.1	74.3	65.3	66.4	70.1	62.3	72.4

CQS: 71.3



## Color Parameters

Color Temperature	Color Rendering Index	Red Component	Color Fidelity	Color Gamut	Color Quality Scale	Color Coordinate CIE 1931	Color Coordinate CIE 1931	Color Coordinate	Color Coordinate	Color Deviation from Black Body
CCT	CRI	CRI R9	TM30 Rf	TM30 Rg	CQS	x	y	u	v	$\Delta uv$
11431 K	77.3	-10.3	71.9	91.0	71.3	0.274	0.279	0.189	0.289	-0.0039

## TM30 Details

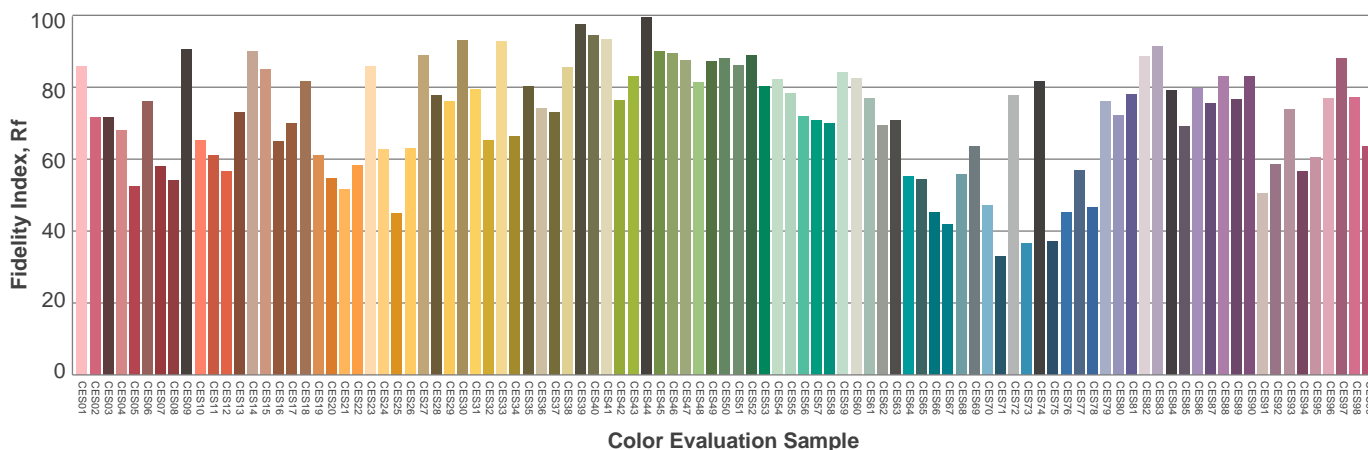
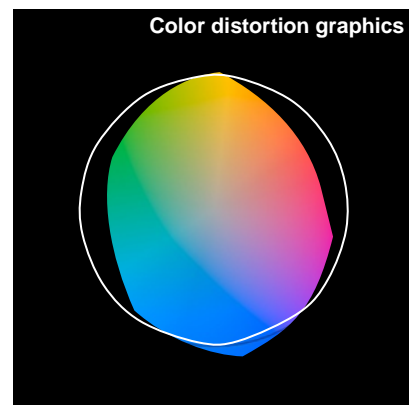
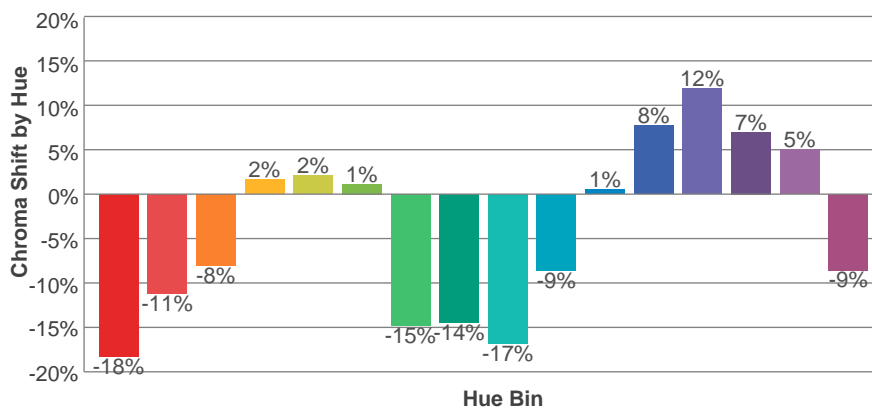
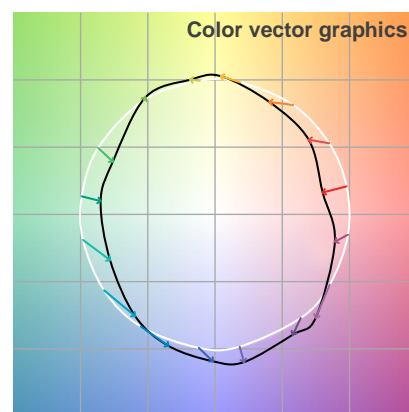
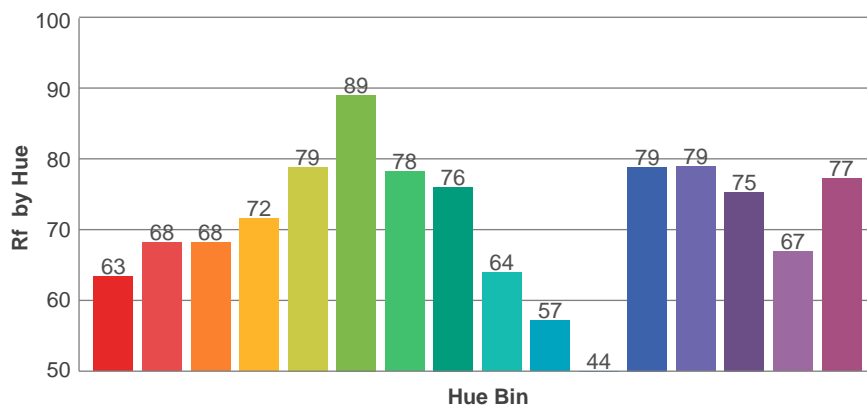
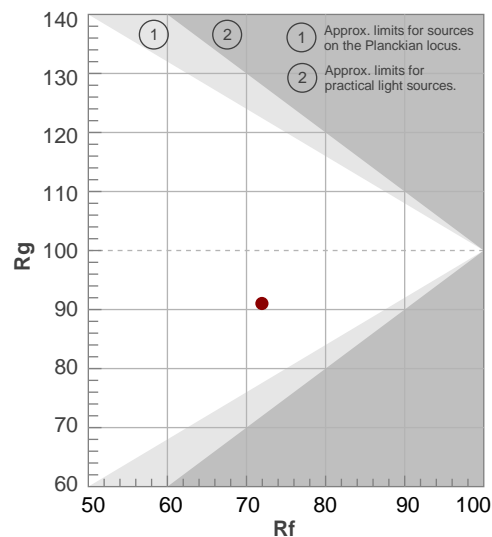
**Rf 71.9**

Fidelity Index Rf

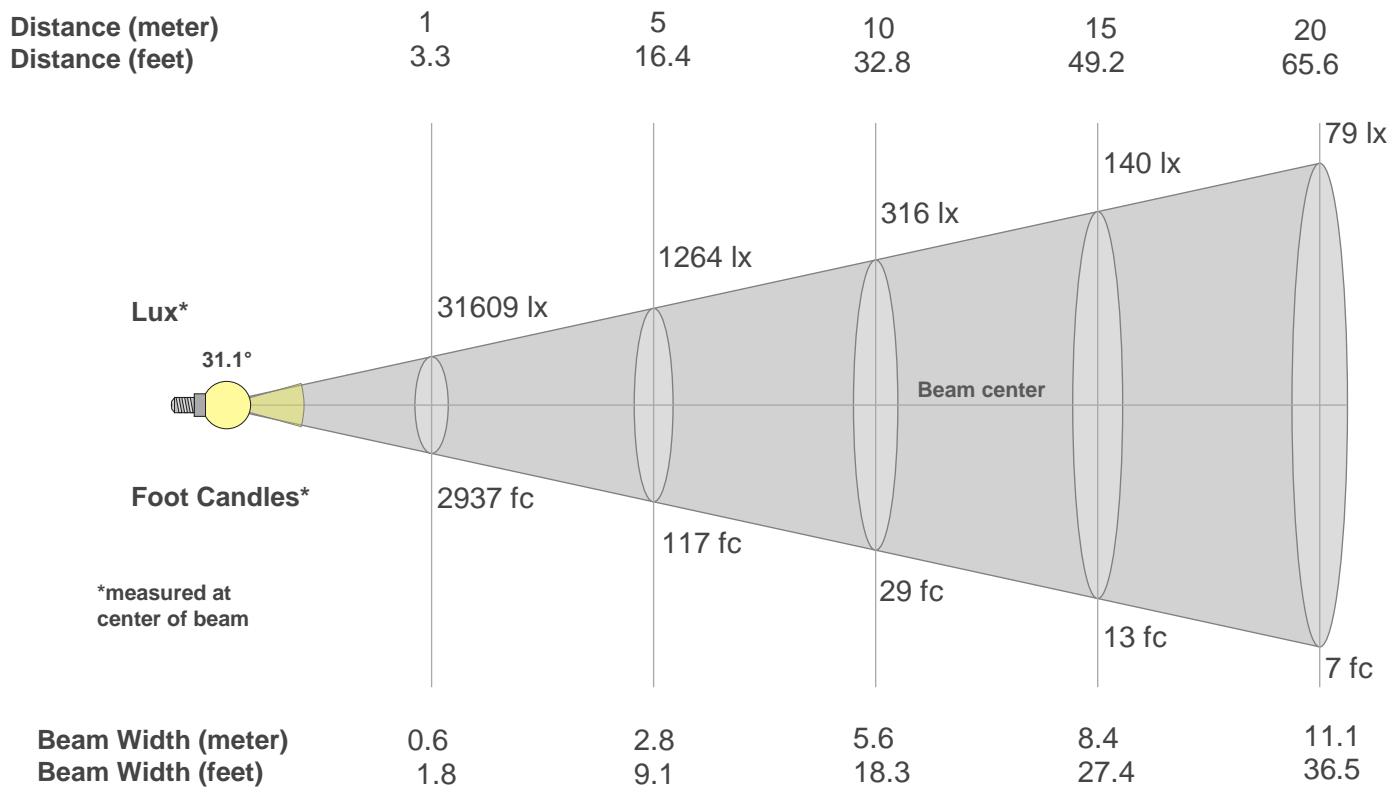
**Rg 91.0**

Gamut Index Rg

Hue Bin	R <sub>f</sub>	Graphic shifts (%)	
		Chroma	Hue
1	63	-18%	-1%
2	68	-11%	11%
3	68	-8%	16%
4	72	2%	15%
5	79	2%	7%
6	89	1%	-2%
7	78	-15%	2%
8	76	-14%	1%
9	64	-17%	19%
10	57	-9%	29%
11	44	1%	25%
12	79	8%	12%
13	79	12%	1%
14	75	7%	-12%
15	67	5%	-26%
16	77	-9%	-7%



## Beam Details



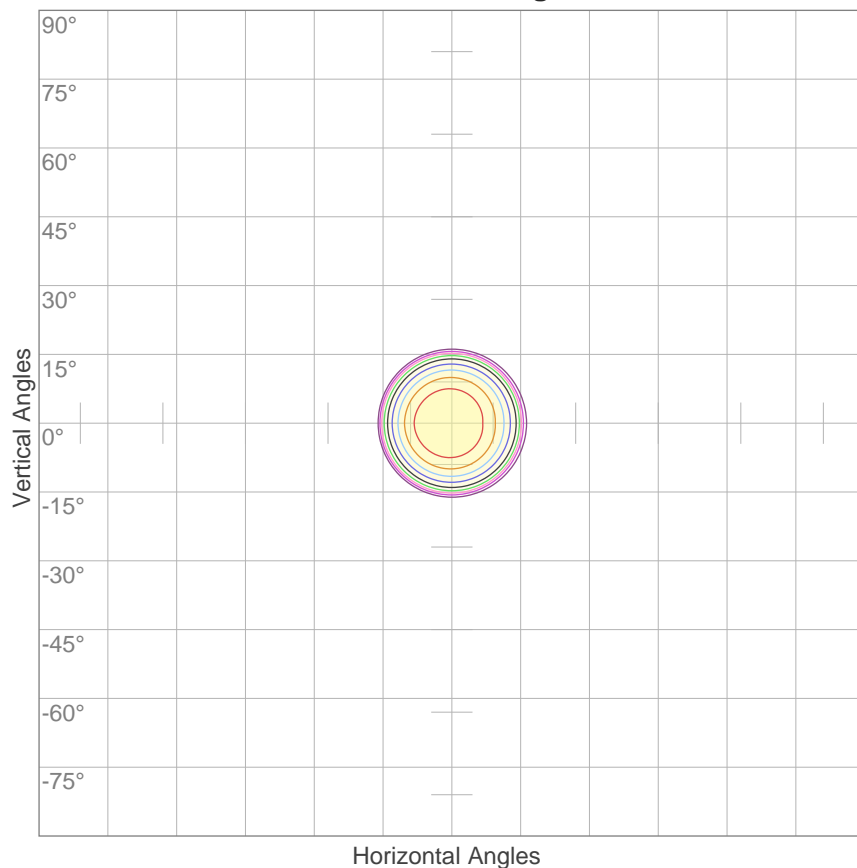
Beam Intensities from 1-20m

m	1	2	3	4	5	6	7	8	9	10	11	12	13	14	15	16	17	18	19	20
ft	3.3	6.6	9.8	13.1	16.4	19.7	23	26.2	29.5	32.8	36.1	39.4	42.7	45.9	49.2	52.5	55.8	59.1	62.3	65.6
lx	31609	7902	3512	1976	1264	878	645	494	390	316	261	220	187	161	140	123	109	98	88	79
fc	2936.6	734.1	326.3	183.5	117.5	81.6	59.9	45.9	36.3	29.4	24.3	20.4	17.4	15	13.1	11.5	10.2	9.1	8.1	7.3

Beam Angle 50%	Field Angle 10%	Cutoff Angle 2,5%	Intensity Ratio in 120° Cone	Intensity Ratio in 90° Cone
31.1°	36°	37.1°	100.0%	100.0%

## ISO Diagrams

### ISO Candela Diagram



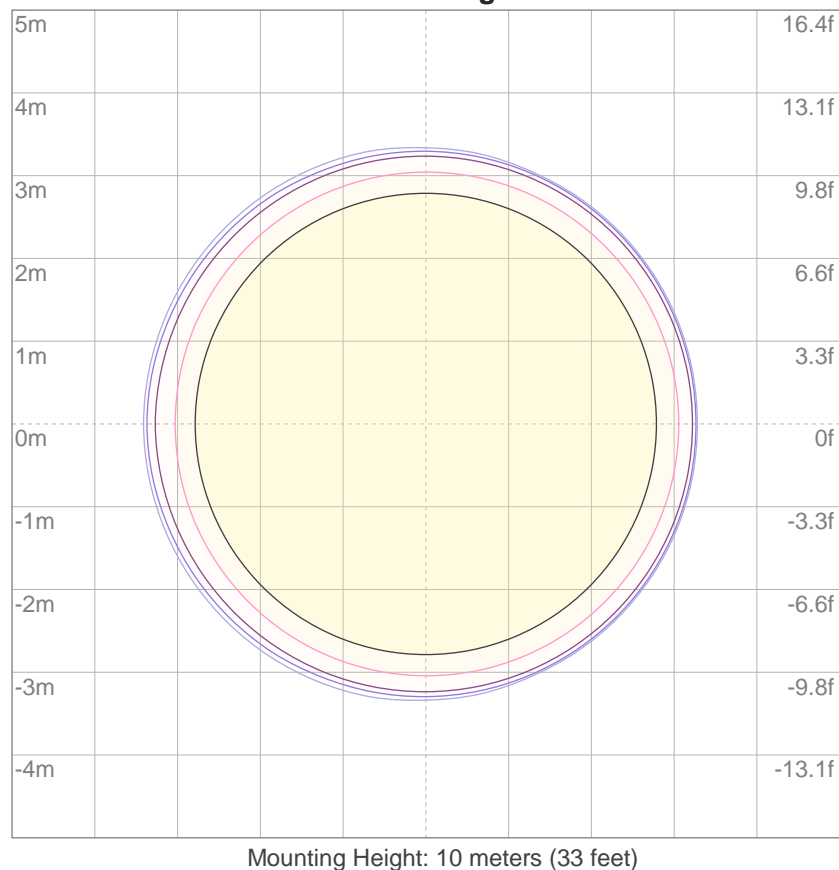
10%	3161 cd
20%	6322 cd
30%	9483 cd
40%	12644 cd
50%	15805 cd
60%	18966 cd
70%	22126 cd
80%	25287 cd
90%	28448 cd

#### Conditions:

Number of c-planes: 2

Candela at center: 31609 cd

### ISO Lux Diagram



3%	9.48 lx
5%	15.8 lx
10%	31.6 lx
30%	94.8 lx
50%	158 lx

#### Conditions:

Number of c-planes: 2

Lux at center: 316 lx

*Lux distribution on a surface  
when lamp is mounted at 10  
meters from the surface.*